

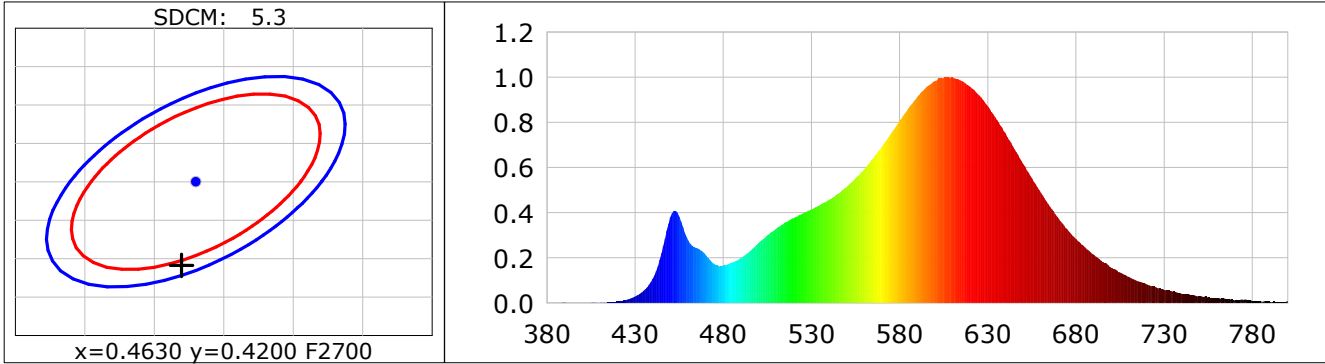
Lightsource Test Report

Product Infomation

Product Category: LED STRIP	Product Type: LED STRIP
Product Spec: DRAC 4	Product Number: 231
Manufacturer: TECSOLED S.L.	Buyer: TECSOLED S.L.

CIE Colorimetric Parameters

Chromaticity coordinates: $x=0.4620$ $y=0.4091$ $u(u')=0.2645$ $v=0.3514$ $v'=0.5271$
 CCT: $T_c=2659K$ ($duv=-0.00072$) Color Ratio: $R=0.256$ $G=0.721$ $B=0.023$
 Peak Wavelength: 607.9nm Half Bandwidth: 111.4nm
 Dominant Wavelength: 584.7nm Color Purity: 0.614
 CRI: $R_a=82.5$, $avgR(1\sim14)=77.9$, $avgR(1\sim15)=77.6$ TM30: $R_f=85$, $R_g=95$
 GAI: $GAI_BB_8=95.3$, $GAI_BB_15=103.7$, $GAI_EES=45.1$
 R1 =81 R2 =93 R3 =94 R4 =80 R5 =82 R6 =93 R7 =79 R8 =56
 R9 =8 R10=84 R11=80 R12=77 R13=84 R14=98 R15=73
 Color Quality Scale: $Q_a=82.5$, $Q_f=84.9$, $Q_p=84.6$, $Q_g=90.3$
 Q1 =77 Q2 =93 Q3 =85 Q4 =81 Q5 =83 Q6 =84 Q7 =83 Q8 =85
 Q9 =93 Q10=91 Q11=87 Q12=84 Q13=82 Q14=72 Q15=74



Photometric Parameters

Luminous Flux: 1051.2 lm Efficiency: 125.39 lm/W Radiant Power: 3.246 W
 Total mains efficacy: 116.11 lm/W Energy Efficiency Class: E (EU 2019/2015)

Electric Parameters

Voltage: 24.000V Current: 0.3493A Power: 8.38W
 Power Factor: 1.0000 Frequency: 0.00Hz

Test Infomation

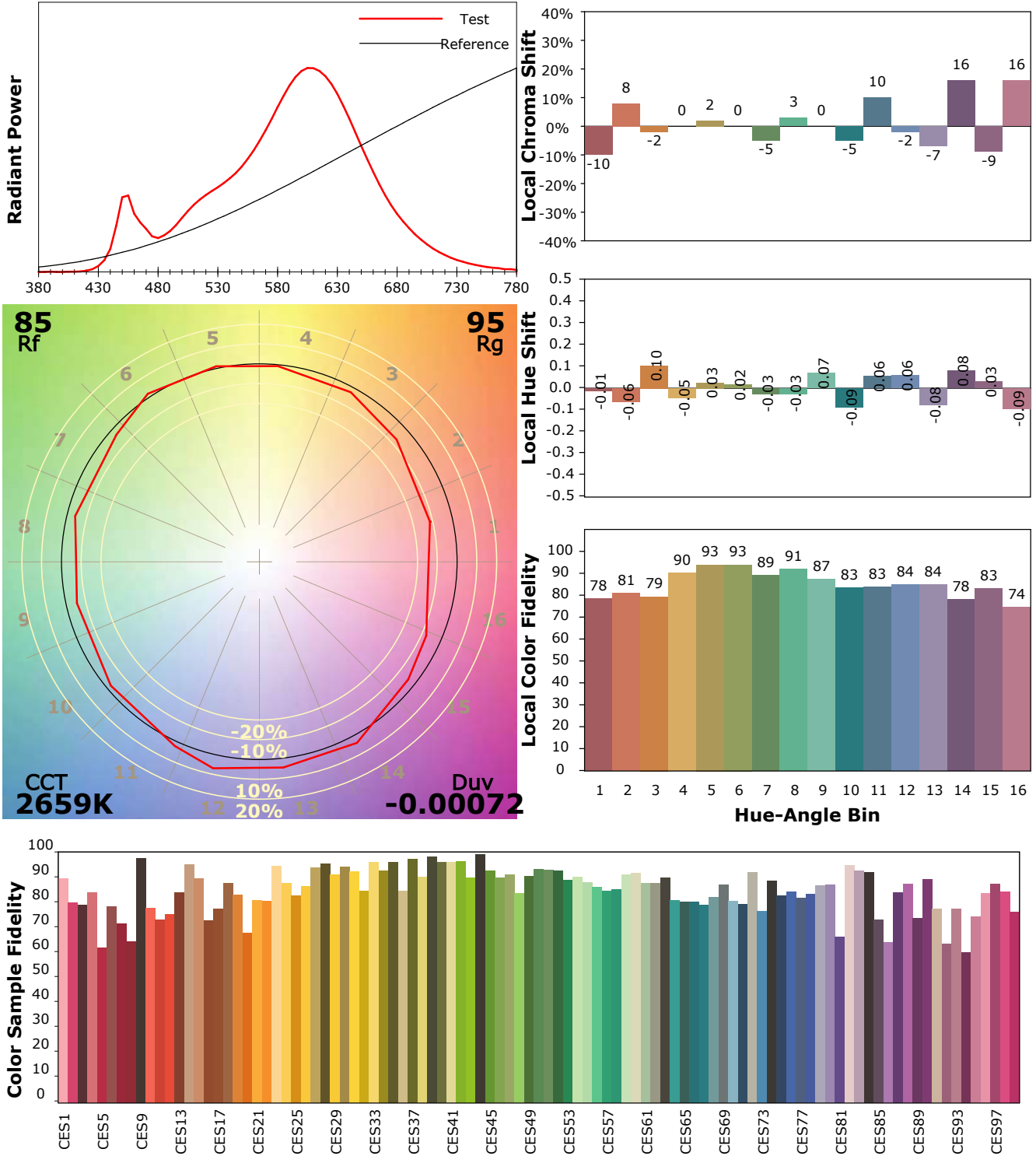
Scan Range: 380~800:1nm Photometric Method: sphere-spectroradiometer
 Stabilization Time: 0 Sec ALC.: 1.0000 Photometric Condition: Sphere diameter: 1.50m, 4PI
 Max of Signal: 46056 (2283) CCD Integration Time: 628.77 ms

IES TM-30-18 Color Rendition Report

Product Information

Product Category: LED STRIP
 Product Spec: 21059602440516
 Manufacturer: TECSOLELED S.L.

Product Type: LED STRIP
 Product Number: 231
 Buyer: TECSOLELED S.L.



Condition: Tx:20.3°C, Ti:19.1°C, R.H.:60%
 Test Lab: TECSOLELED S.L.
 Operator: JORDAN GIL DIAZ

Test Device: Inventfine CMS-2S (Plus)
 Test Time: 2021-10-28 11:23:54
 Inspector: